

PRESSURE MODULE

ENTRY LEVEL SINGLE CHANNEL BAROMETRIC



The gain, offset and thermal drift of the pressure sensor is digitally compensated to minimise errors and to create a single-ended, amplified output in the 0.5 to 4.5 Volt range. The output voltage changes with the absolute pressure applied to the pressure port

Electrical

- Compensated pressure range 400 to 1150mbar
- Supply voltage 8 to 16V unregulated
- Supply current 14mA max
- Output voltage @ 400mbar = 0.5V \pm 80mV over compensated temperature range
- Output voltage @ 1150mbar = 4.5V \pm 80mV over compensated temperature range
- Maximum output voltage 4.85V
- Overall accuracy \pm 15mbar over compensated temperature range
- Electrical output impedance 100 ohms
- Frequency response 70Hz

The sensor is protected against short circuit between output and ground for short periods but it may be damaged if the output is connected to the supply or if a reverse bias supply voltage is applied.

Cable and Connection Definition

- 24 AWG unscreened cable
- Connection:
 - Red = Supply
 - Green = Ground
 - White = Barometric Signal
- Various automotive and military standard connectors are available
- Cable length is shown on the order details but any length is available upon request

Mechanical

- Weight less than 55g (including cable)
- Aluminium alloy body hard anodised black
- Polyester cable boss for strain relief to sensor body

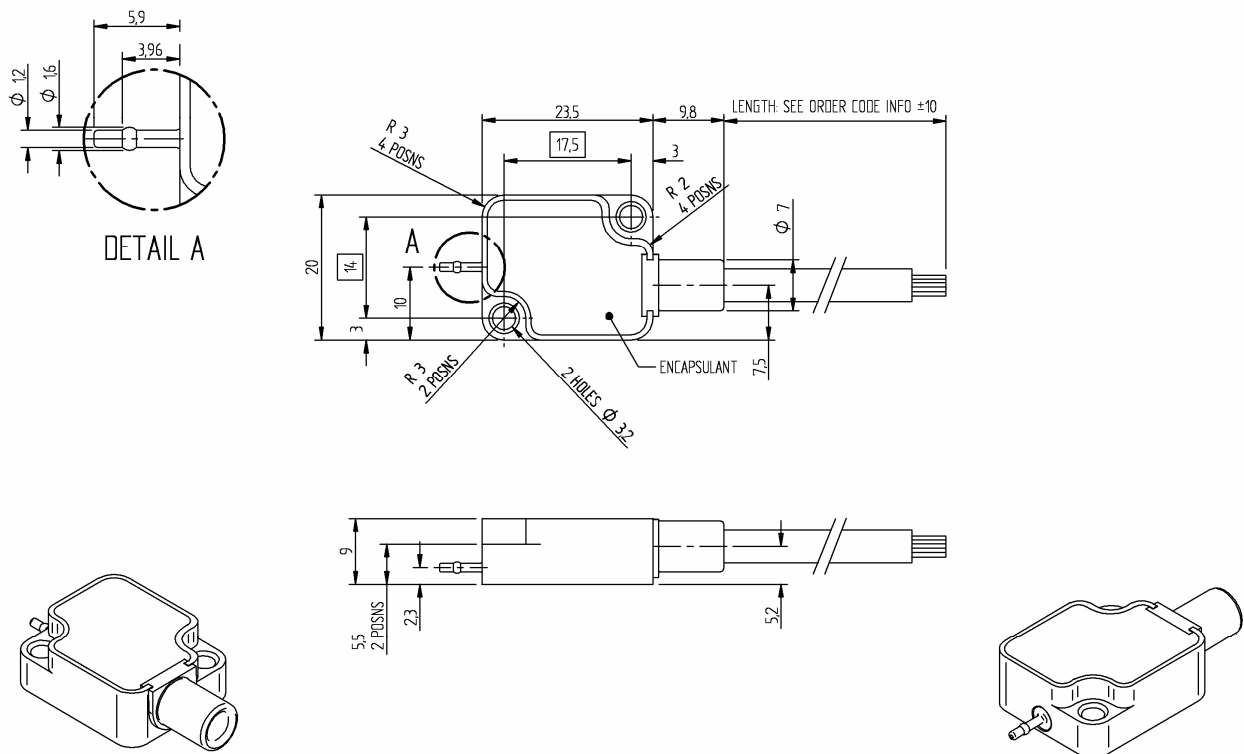
Environmental

- Minimum pressure 400 mbar
- Maximum pressure 1150 mbar
- Pressure overload 3.6 bar for 300s
- Pressure media must be a non-corrosive gas
- Sensor body resistant to standard motorsport fluids
- Maximum humidity 100% but water should not be allowed to condense inside the unit
- Operating temperature -40 to +125°C
- Compensated temperature range 0 to 85°C
- Viton jacketed cable (200°C)
- Vibration 50 to 2500Hz @ 40g 8hrs per axis

27/11/07

PRESSURE MODULE

ENTRY LEVEL SINGLE CHANNEL BAROMETRIC



Cable Length 1000mm	Order Code O 030 330 043 010
-------------------------------	--